

BLOOD VESSELS LAB

EXERCISES 11, 12, 13, 14 & 15

Dr. Lisa Brinn

Thoracic Blood Vessels Terminology List

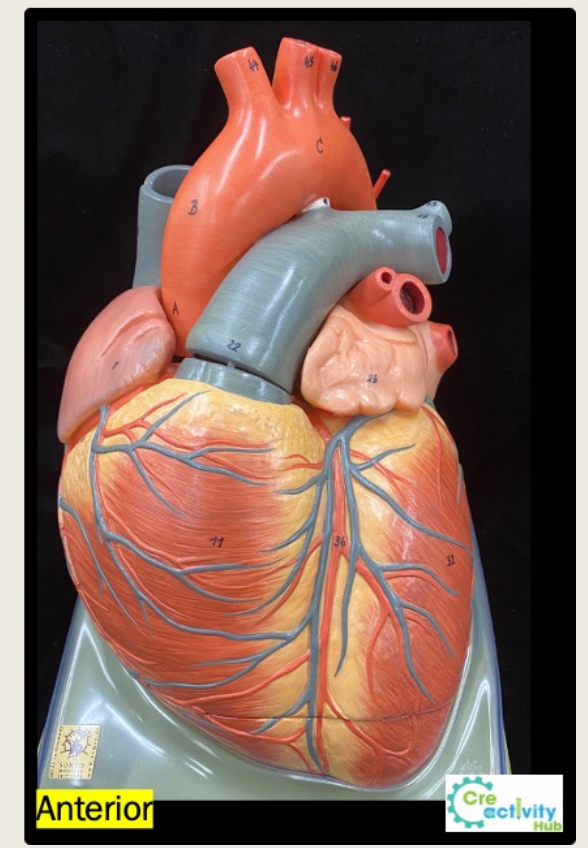
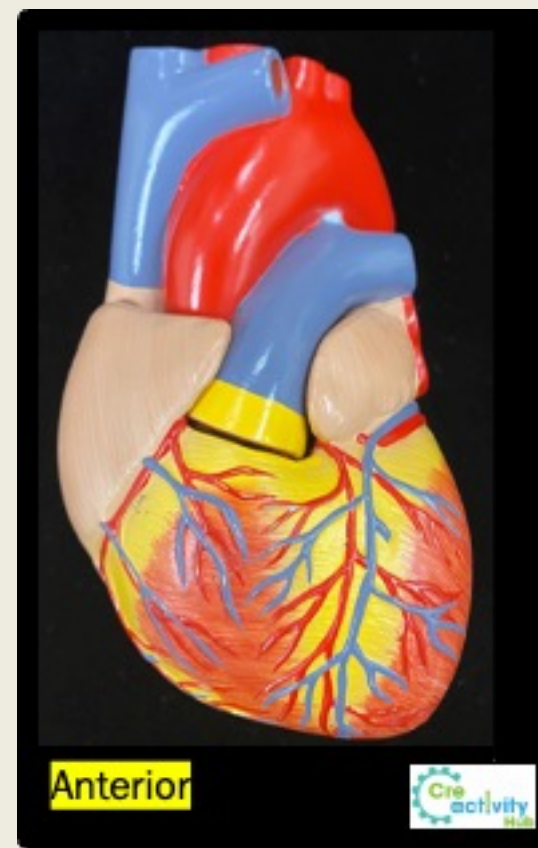
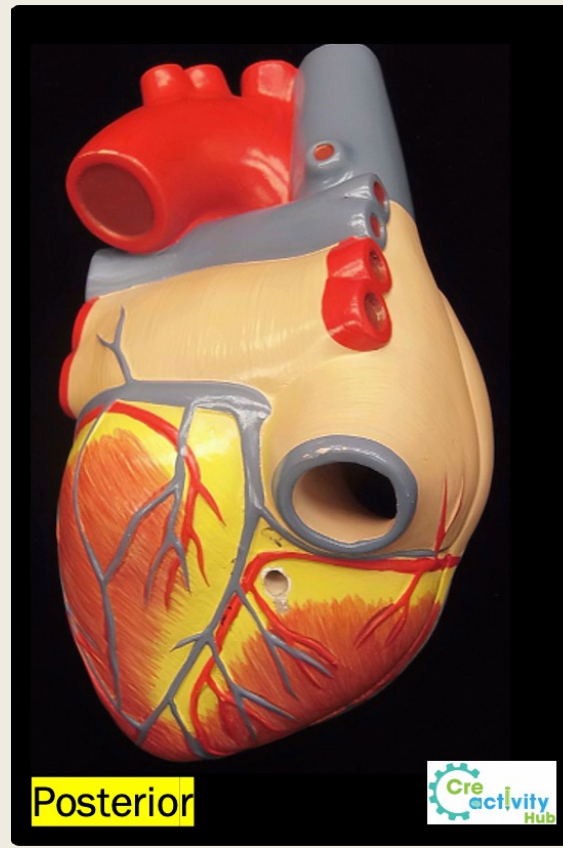
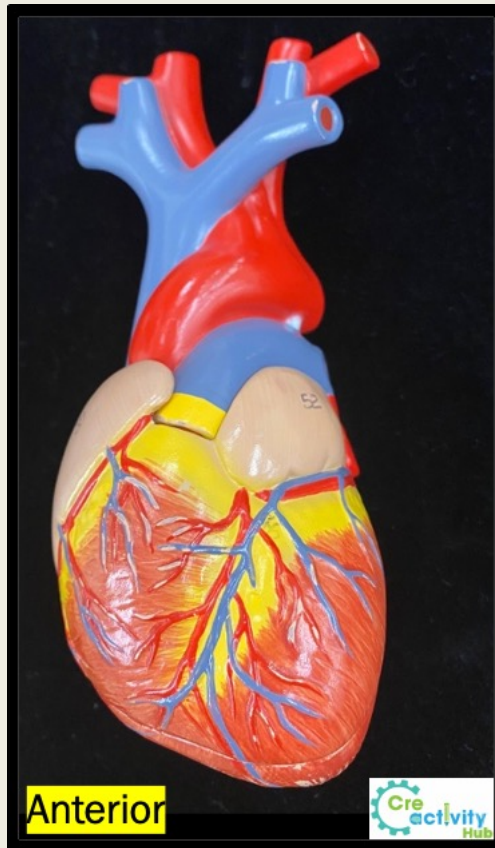
(you may choose just one answer when there are multiple acceptable terms)

- Azygos vein
- Brachiocephalic trunk or brachiocephalic artery
- External carotid artery
- Left brachiocephalic vein
- Left common carotid artery
- Left internal jugular vein
- Left subclavian artery
- Left subclavian vein
- Right brachiocephalic vein
- Right common carotid artery
- Right subclavian artery
- Right subclavian vein
- Thoracic aorta

[Video Recording of Lab Model – branches off the aortic arch](#)

[Video Recording of Lab Model – major blood vessels that branch off the heart](#)

Heart Model – Superficial View



Upper Limb Blood Vessels Terminology List

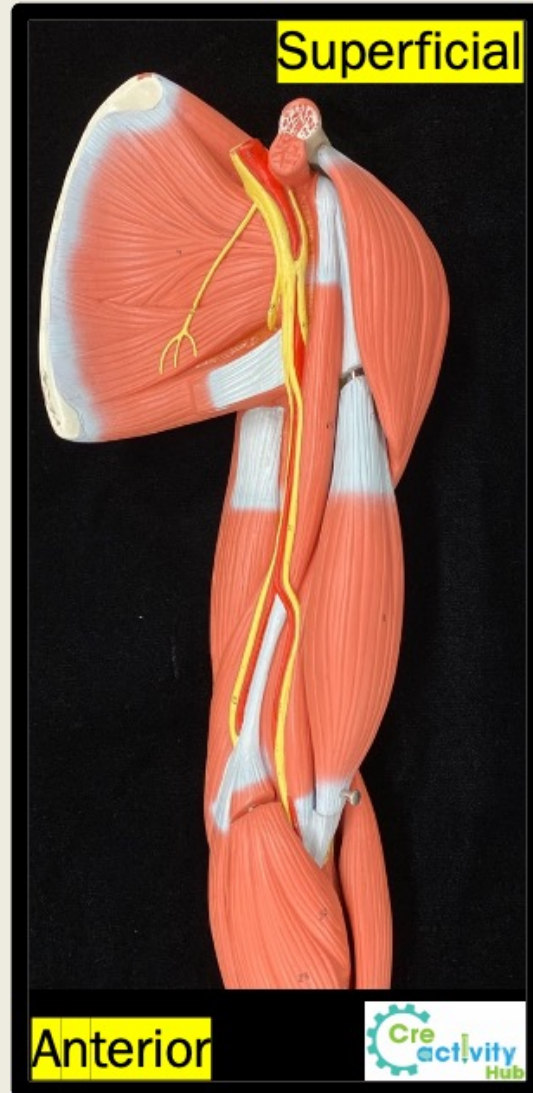
- Axillary artery
- Axillary vein
- Basilic vein
- Brachial artery
- Cephalic vein
- Median cubital vein
- Radial artery
- Ulnar artery

- Flat Model
 - [Thoracic and upper limb](#)
 - [Upper Limb Arteries and Veins](#)

[Video Recording Link of Lab Model - Upper Limb Blood Vessels](#)

[Video Recording Link of Flat model - Upper limb Blood Vessels](#)

Upper Limb Blood Vessels



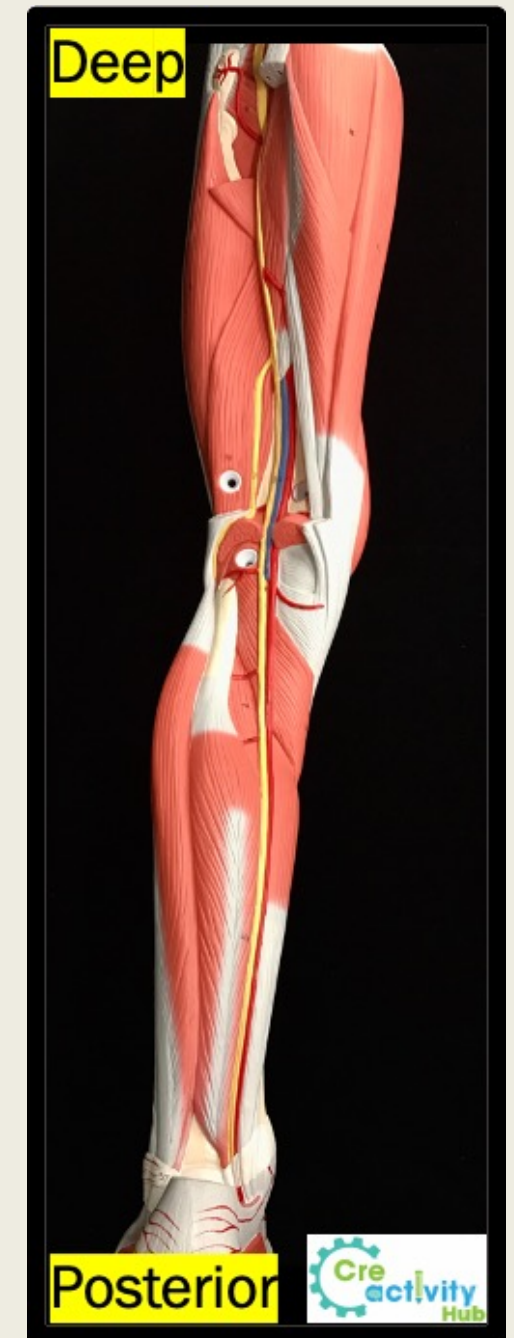
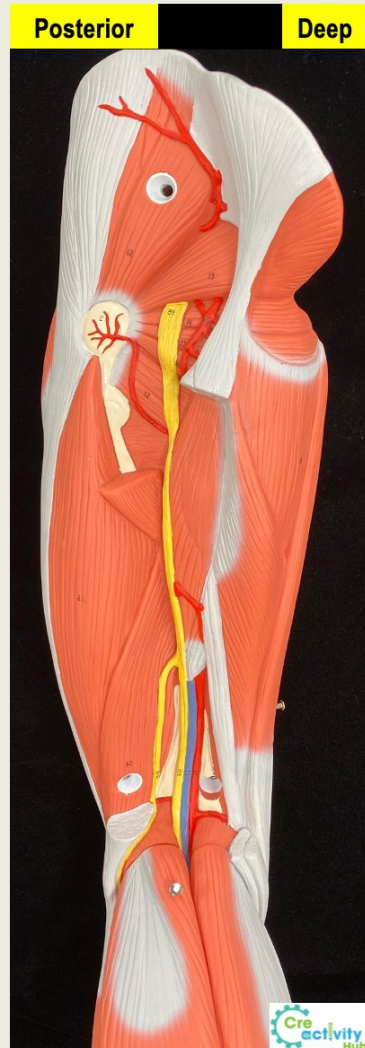
Lower Limb Blood Vessels Terminology List

- Anterior tibial artery
- Femoral artery
- Great saphenous vein
- Popliteal artery
- Popliteal vein
- Posterior tibial artery

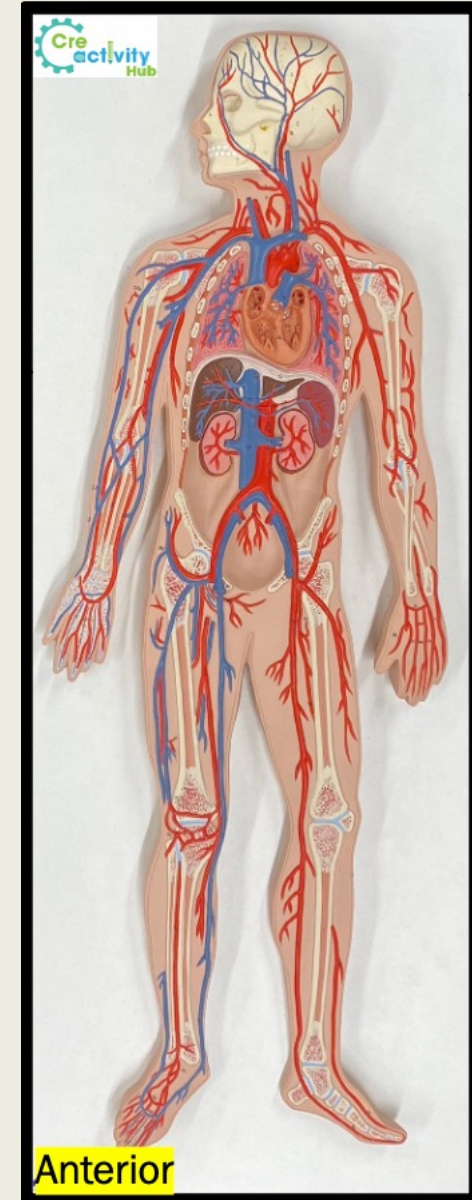
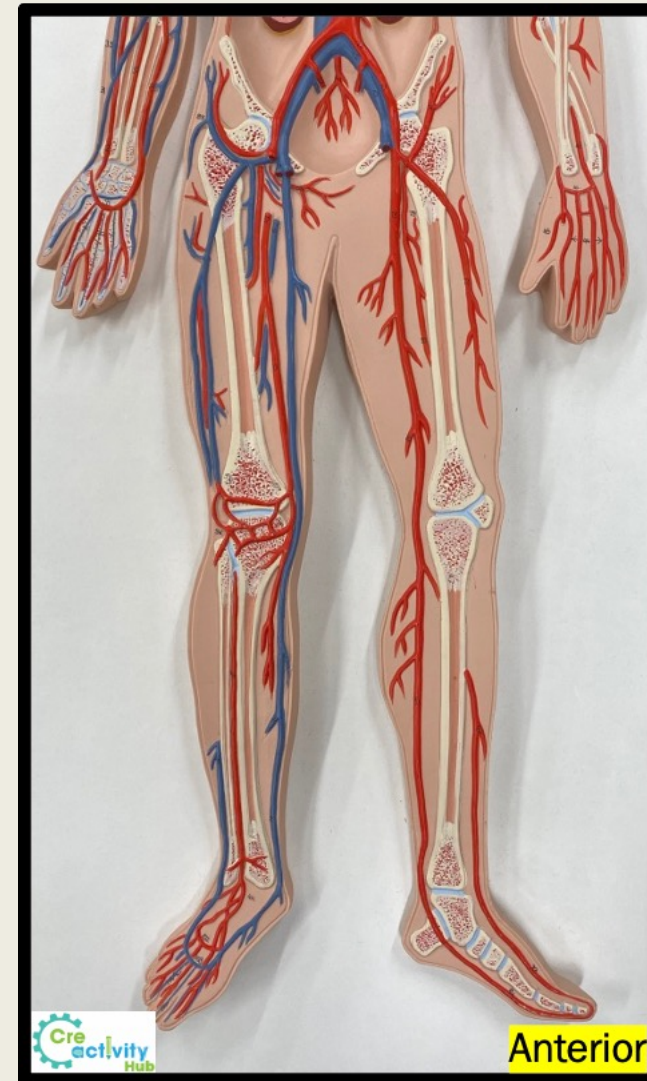
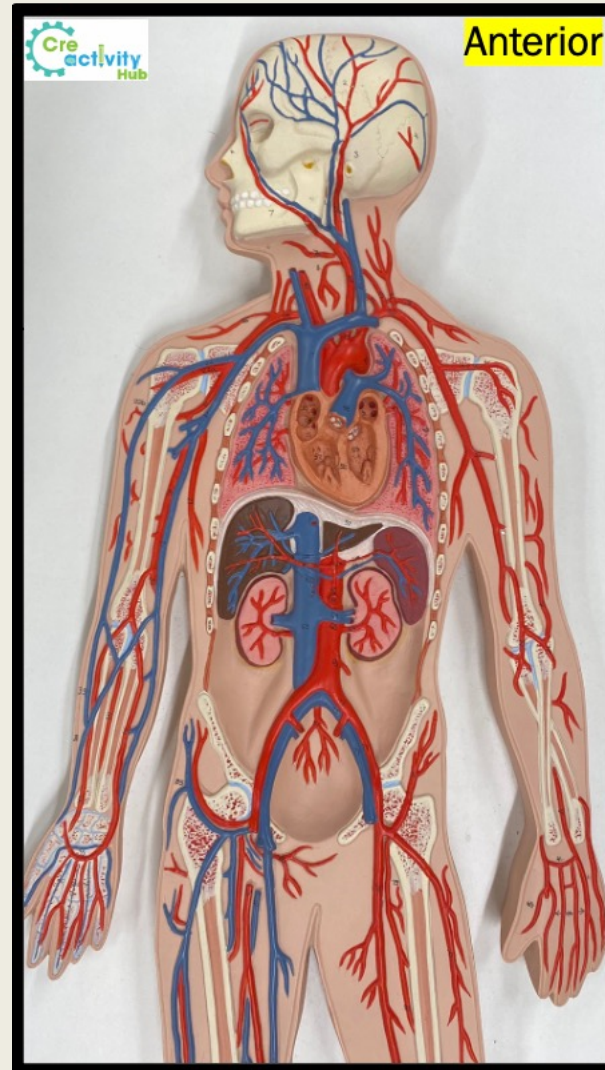
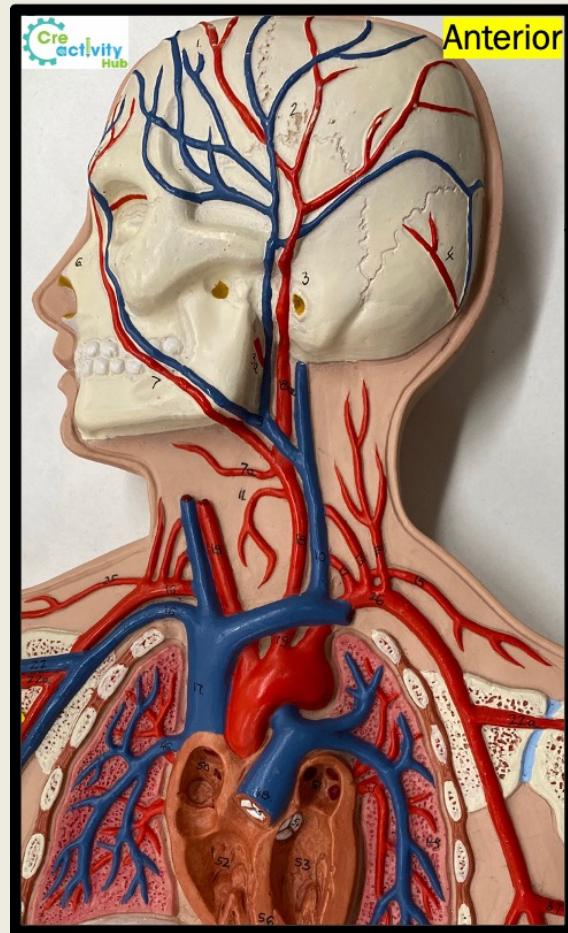
[Video Recording Link of Lab - Model Lower Limb Blood Vessels](#)

[Video Recording Link of Flat Model - Lower limb blood vessels](#)

Lower Limb Blood Vessels



Blood Vessels Model



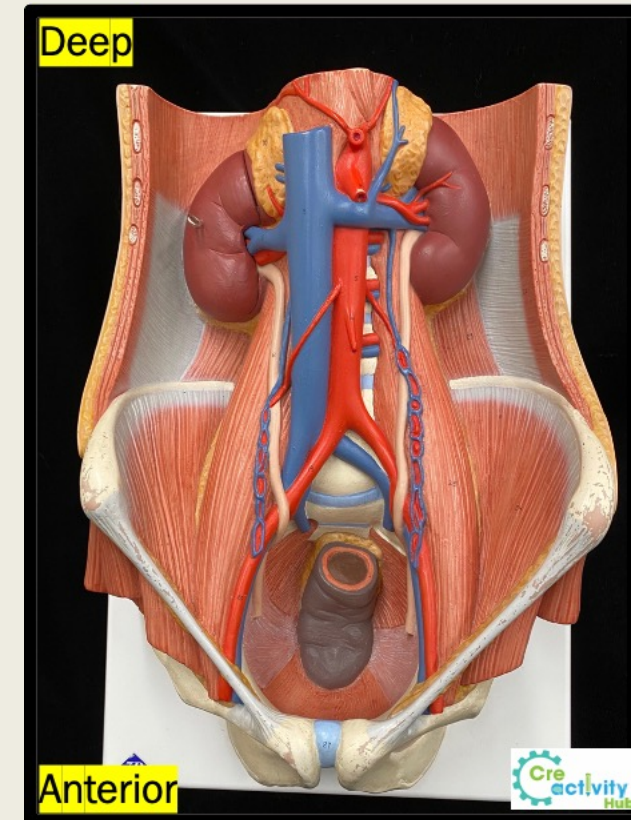
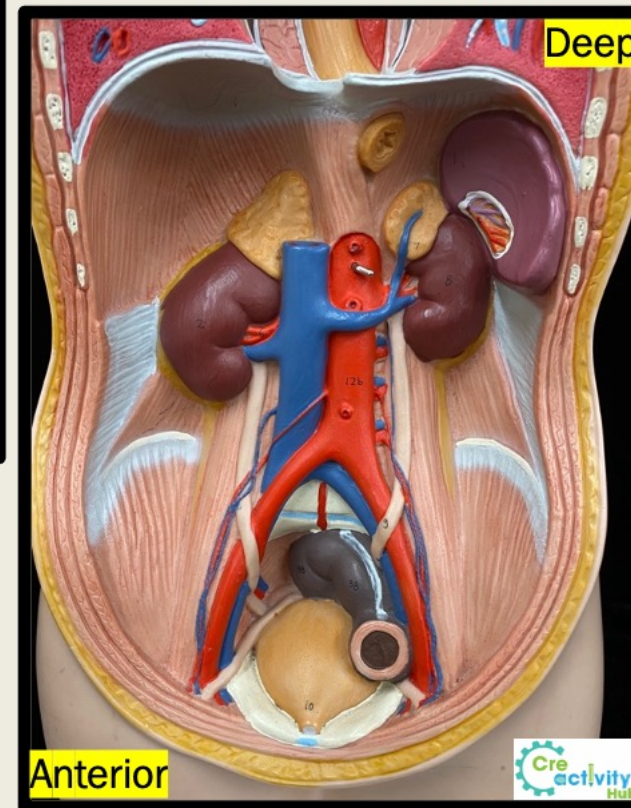
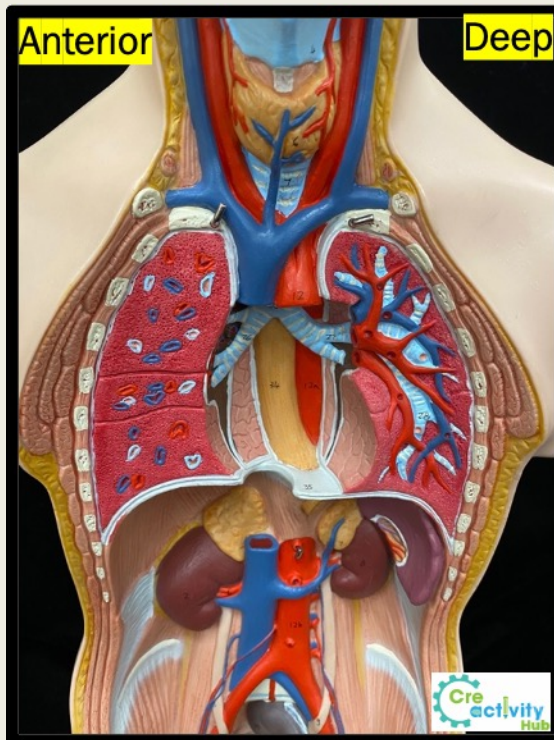
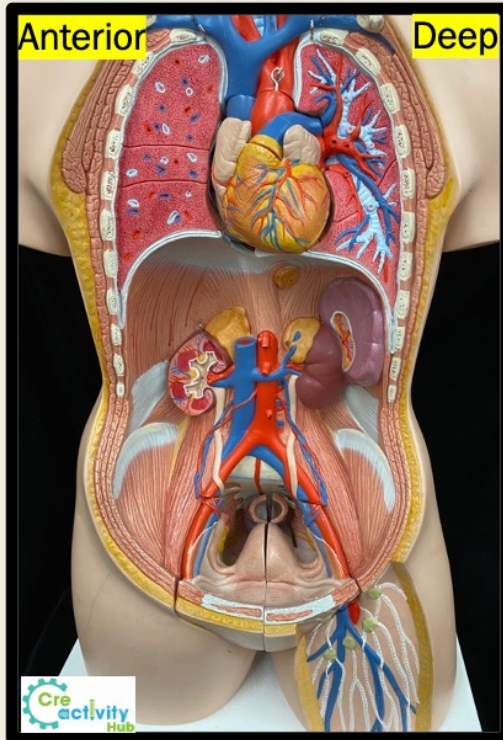
Abdominopelvic Blood Vessels Terminology List

- Abdominal aorta
- Celiac trunk
- Common hepatic artery
- Common iliac artery
- Common iliac vein
- External iliac artery
- External iliac vein
- Gonadal artery
- Gonadal vein
- Hepatic artery proper
- Hepatic portal vein
- Hepatic vein
- Inferior mesenteric artery
- Inferior mesenteric vein
- Inferior vena cava
- Internal iliac artery
- Internal iliac vein
- Left gastric artery
- Renal artery
- Renal vein
- Splenic artery
- Splenic vein
- Superior mesenteric artery
- Superior mesenteric vein

Link to Video Recording for Models of Thoracic and Abdominopelvic Regions

- Flat Model
 - [*Thoracic and upper limb*](#)
 - [*Thoracic and abdominal blood vessels*](#)
- [Link to Video Recording of Lab Model for Abdominal Blood Vessels](#)
- Hepatic Portal System Link to Video Recordings
 - [*Anterior View*](#)
 - [*Posterior View*](#)

Thorax and Abdominal Cavity Blood Vessels



Hepatic Portal System

